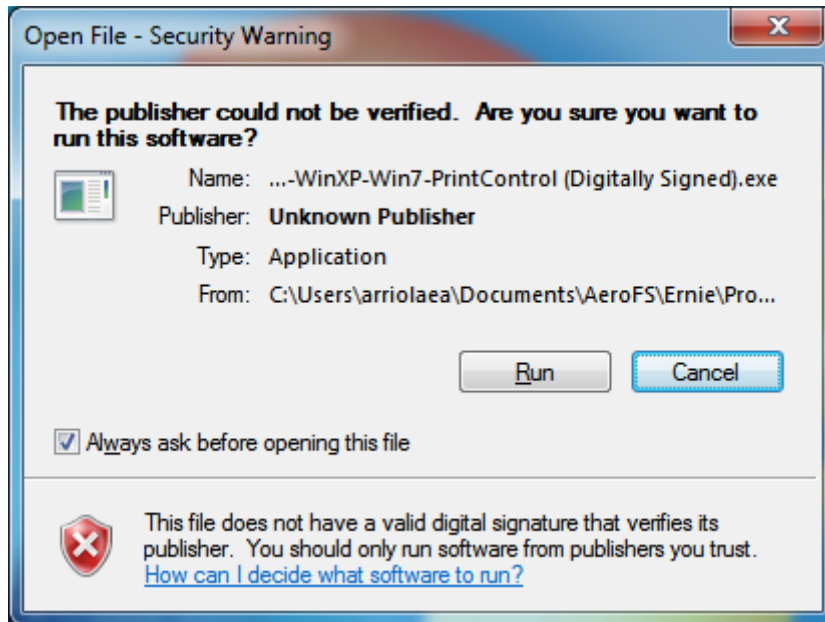
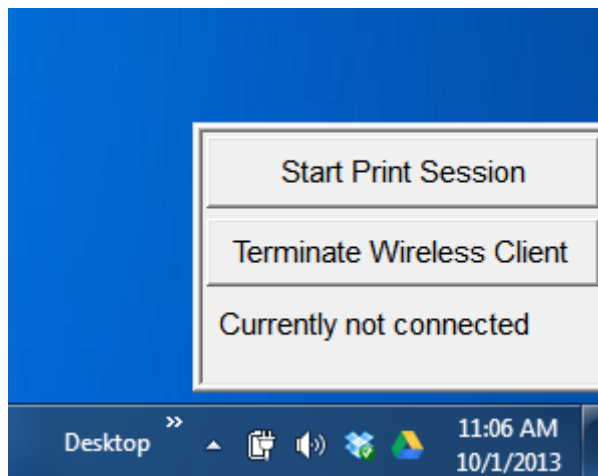


Once downloaded, if the file does not self-install, please double click on the downloaded file. You may get an 'Open File – Security Warning' as seen below. Select 'Run' to proceed with the installation.



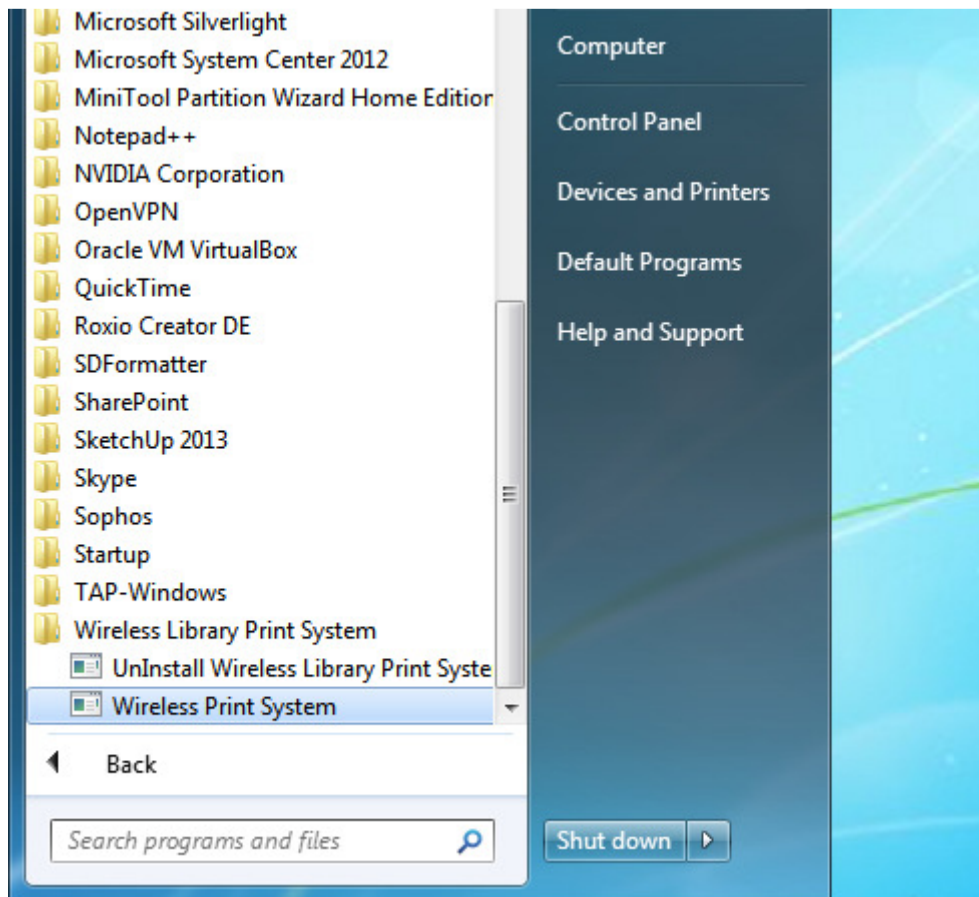
Once installed, a small window will appear on the bottom right corner of your desktop.



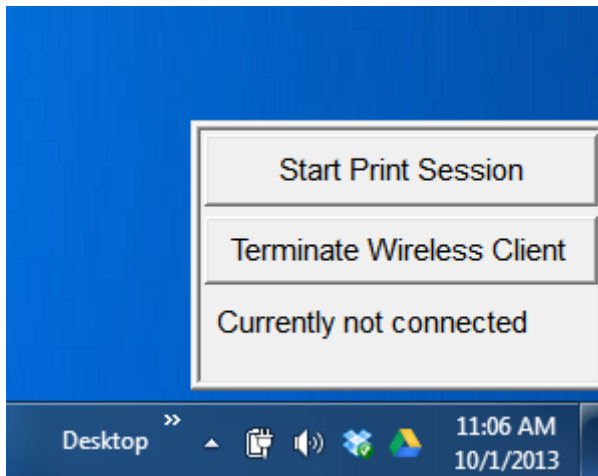


If the window does not appear, go to **'Start'**

Once the **'Start Menu'** is visible, go to **'Wireless Library Print System'**, and click on **'Wireless Print System'** as displayed in the image.



When the small window appears, click on 'Start Print Session'.



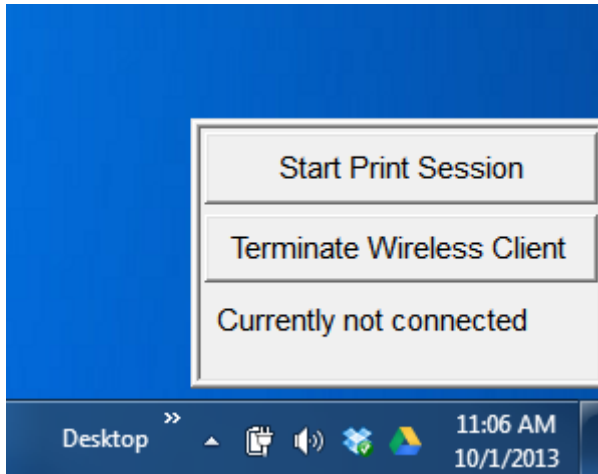
The following window appears. Enter your library **Card number** and **Pin**.

Choose which City of El Paso Library branch and section to print to.

A screenshot of a software dialog box titled 'Comprise Wireless Printing @ your Library'. The dialog box has a light gray background and a blue header with the 'Comprise' logo and a person icon. Below the header, it says 'Please enter your information below'. There are two input fields: 'Card Number:' and 'Pin:'. Below these is a dropdown menu labeled 'Where would you like to Print?' with two options: 'Armijo Wifi Print' and 'Clardy Fox Wifi Print'. At the bottom, there are 'OK' and 'Cancel' buttons. The version number 'v 3.0' is displayed in the bottom right corner.

At this point, any print job you submit to the "**Wireless Printer**" can be retrieved at the Print Release Station for your chosen branch.

Once you finish with your print session, click on '**Terminate Wireless Client**'. This will terminate the session and no further print jobs will be forwarded to the Library branch.



Recap

To run program:

Go to **Start --> Programs --> Wireless Library Print System --> Wireless Print System**

A small window will appear on the bottom right corner of your desktop.

Click on '**Start Print Session**'. Then Login with your Library Card Number and Last Name.

At this point, any print job you submit from your device can be retrieved at the Print Release Station.

Uninstalling Print Module from your laptop:

If you no longer need Library Wireless printing and are ready to uninstall the print module from your laptop:

Windows Users

Go to **Start --> Programs --> Wireless Library Print System --> Uninstall Wireless Library Print System**.

This will completely remove the print module from your wireless device.

Mac Users

Drag the print control to the Trash